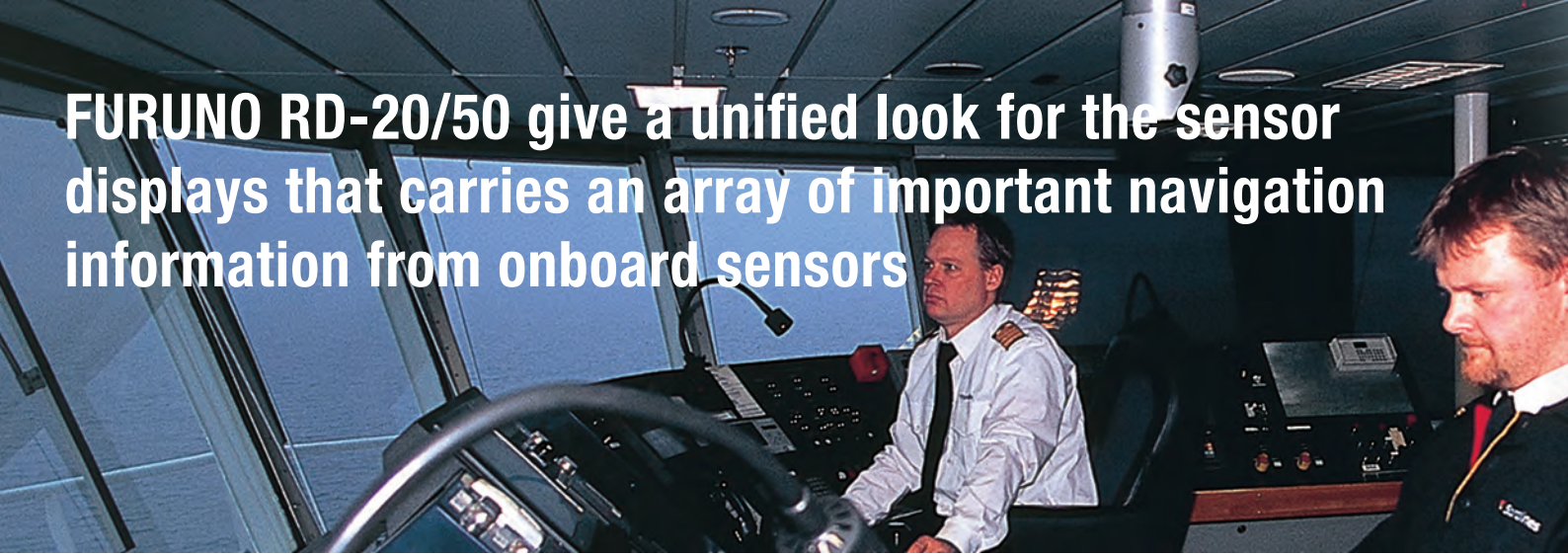


# REMOTE DISPLAY



Models:  
RD-20/RD-50

**FURUNO RD-20/50 give a unified look for the sensor displays that carries an array of important navigation information from onboard sensors**



## REMOTE DISPLAY

The RD-20/50 are the remote display units that display the data from onboard sensors. The displays are switched by the remote controller. The RD-50, 8.4-inch color LCD, has 3 display modes: digital, analog and graph. The RD-20 shows the data in alphanumerics on its red LED panel.

Up to 10 displays can be connected with a daisy chain cable. The display brilliance of all units connected can be centrally controlled from 1 dimmer controller.



**RD-50**

- ▶ High-contrast 8.4-inch color LCD
- ▶ Digital/graph/analog displays available
- ▶ Display orientation of up to 4-way split screen
- ▶ Viewable under the direct sunlight at wing console
- ▶ Adjustable display background color for use in both daytime and night time

### ▶ Red LED display

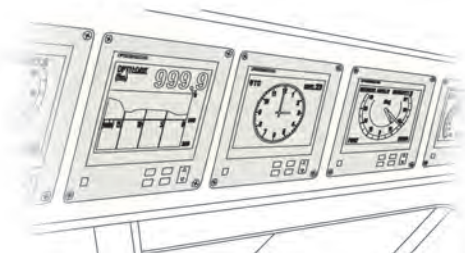
- ▶ Up to 10 displays can be connected with a daisy chain cable
- ▶ Display brilliance can be collectively controlled from one dimmer controller under the daisy chain connection



**RD-20**

### ■ Suggestion for installation

- Overhead console



- Desktop



The RD-20/50 can be mounted on the overhead console as well as on the desktop. Both units come with an optional bracket for desktop mounting. The RD-50 can also be installed overboard with the optional waterproof box.



RD-20



RD-50

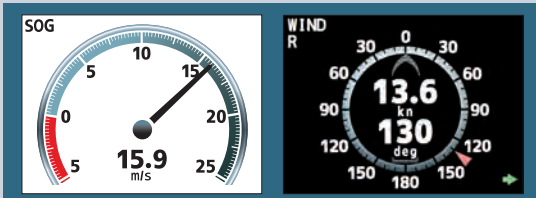
## RD-50 Data to be displayed

### Digital display



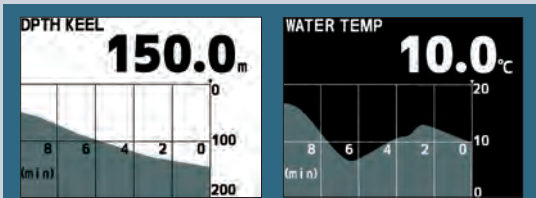
- Ship speed kn, km/h, m/s
- Heading (HDG) deg
- Course (COG) deg
- Actual / Ordered rudder angle deg
- Depth m, ft, fm
- Total distance NM, km
- Trip distance NM, km
- Water temperature °C, °F
- Rate of turn (ROT) deg/min
- Wind Direction deg
- / Speed kn, km/h, m/s, mph
- Propeller pitch %
- Engine revolutions rpm
- Shaft revolutions rpm
- Time
- Latitude and Longitude
- Destination
- 1/2/3-axes ship speed

### Analog display



- Wind Direction deg
- / Speed kn, km/h, m/s, mph
- Propeller pitch %
- Rate of turn (ROT) deg/min
- Ship speed kn, km/h, m/s
- Engine revolutions rpm
- Shaft revolutions rpm
- Actual / Ordered rudder angle deg
- Drift / HDG / COG deg
- Time

### Graph display



- Water temperature °C, °F
- Depth m, ft, fm

## RD-20 Data to be displayed



- Ship speed kn, km/h, m/s
- Heading (HDG) deg
- Course (COG) deg
- Actual / Ordered rudder angle deg
- Depth m, ft, fm
- Total distance NM, km
- Trip distance NM, km
- Water temperature °C, °F
- Rate of turn (ROT) deg/min
- Wind Direction deg
- / Speed kn, km/h, m/s, mph
- Engine revolutions rpm
- Propeller pitch %
- Shaft revolutions rpm

# SPECIFICATIONS

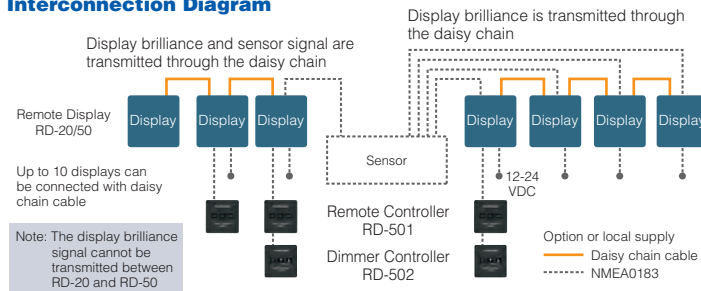


Model	RD-20	RD-50
<b>Product Name</b>	REMOTE DISPLAY	
Display	Red LED	8.4-inch color LCD
<b>Power Supply</b>		
Remote Display (RD-20/50)	DC 12-24 V	DC 12-24 V
Remote Controller (RD-501)		DC 5 V
Dimmer Controller (RD-502)		DC 5 V
<b>Environment</b>		
Temperature	-15°C~+55°C	-25°C~+55°C
Waterproofing	Display	
	Flush mount	Front: IP22 Back: IP22
	Wall mount (with Waterproof Box)	—
	Remote Controller (RD-501)	Front: IP22 Back: IP20
Dimmer Controller (RD-502)	Front: IP22 Back: IP20	
Vibration	IEC 60945-4	

## Equipment List

Standard	
Remote Display	RD-20/50
Installation Materials	
Option	
Remote Controller	RD-501
Dimmer Controller	RD-502
Waterproof Box (for RD-50)	DS-605
Bracket for desktop mounting	

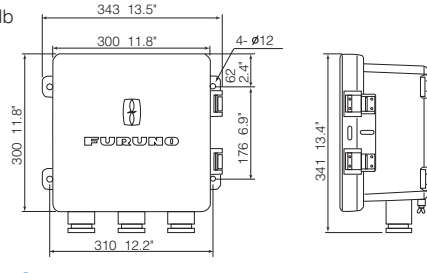
## Interconnection Diagram



## Waterproof Box (for RD-50)

### DS-605

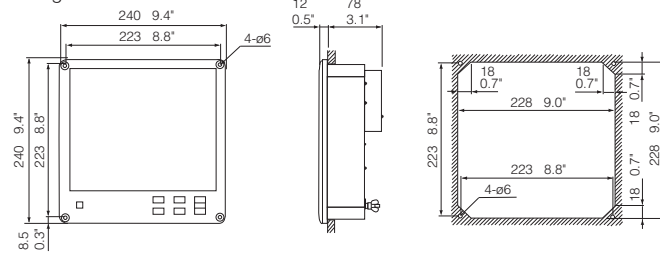
9.6 kg 21.2 lb



## Remote Display (Flush mount)

### RD-50

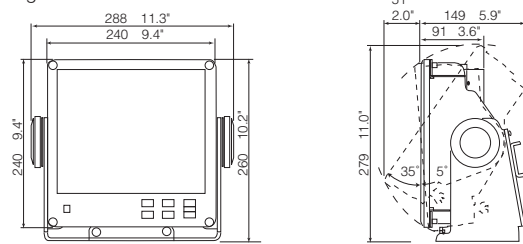
2.1 kg 4.62 lb



## Remote Display (with an optional bracket)

### RD-50

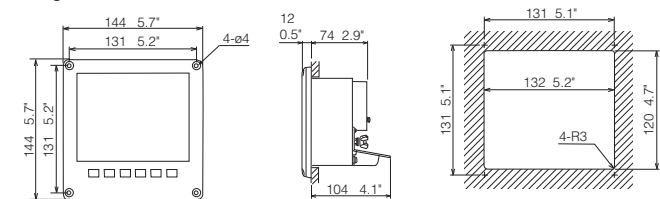
3.3 kg 7.28 lb



## Remote Display (Flush mount)

### RD-20

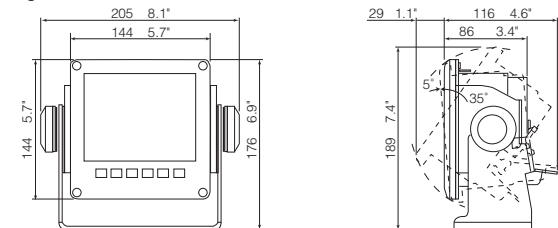
0.8 kg 1.76 lb



## Remote Display (with an optional bracket)

### RD-20

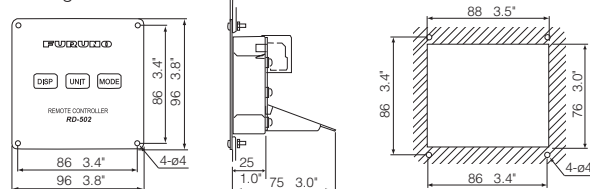
1.3 kg 2.87 lb



## Remote Controller

### RD-501

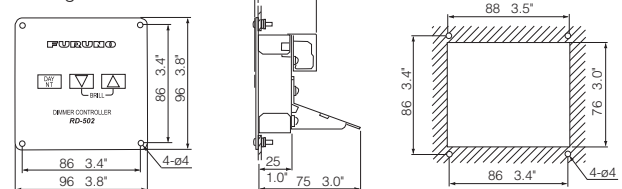
0.53 kg 1.17 lb



## Dimmer Controller

### RD-502

0.53 kg 1.17 lb



All brand and product names are registered trademarks, trademarks or service marks of their respective holders.

SPECIFICATIONS SUBJECT TO CHANGE WITHOUT NOTICE

**FURUNO ELECTRIC CO., LTD.**  
Japan | www.furuno.com

**FURUNO U.S.A., INC.**  
U.S.A. | www.furunousa.com

**FURUNO PANAMA S.A.**  
Republic of Panama | www.furuno.com.pa

**FURUNO (UK) LIMITED**  
U.K. | www.furuno.co.uk

**FURUNO NORGE A/S**  
Norway | www.furuno.no

**FURUNO DANMARK A/S**  
Denmark | www.furuno.dk

**FURUNO SVERIGE AB**  
Sweden | www.furuno.se

**FURUNO FINLAND OY**  
Finland | www.furuno.fi

**FURUNO POLSKA Sp. z o.o.**  
Poland | www.furuno.pl

**FURUNO DEUTSCHLAND GmbH**  
Germany | www.furuno.de

**FURUNO FRANCE S.A.S.**  
France | www.furuno.fr

**FURUNO ESPAÑA S.A.**  
Spain | www.furuno.es

**FURUNO ITALIA S.R.L.**  
Italy | www.furuno.it

**FURUNO HELLAS S.A.**  
Greece | www.furuno.gr

**FURUNO (CYPRUS) LTD**  
Cyprus | www.furuno.com.cy

**FURUNO SHANGHAI CO., LTD.**  
China | www.furuno.com/cn

**FURUNO CHINA CO., LTD.**  
Hong Kong | www.furuno.com/cn

**FURUNO KOREA CO., LTD**  
Korea

**FURUNO SINGAPORE**  
Singapore | www.furuno.sg

**PT FURUNO ELECTRIC INDONESIA**  
Indonesia | www.furuno.id

**FURUNO ELECTRIC (MALAYSIA) SND. BHD.**

Malaysia | www.furuno.my

F-2407CAS

Catalogue No. CA00002412