

FURUNO

**TruEcho CHIRP WITH UNIQUE
FISH SIZE INDICATOR**

Model

FCV-1900G

*High precision fish size graph
for **efficient and sustainable fishing***

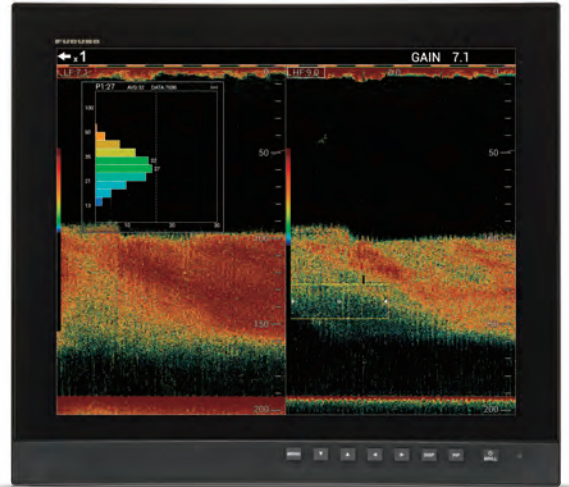


Photo: 19" Marine Display MU-192HD (Customer Supply)

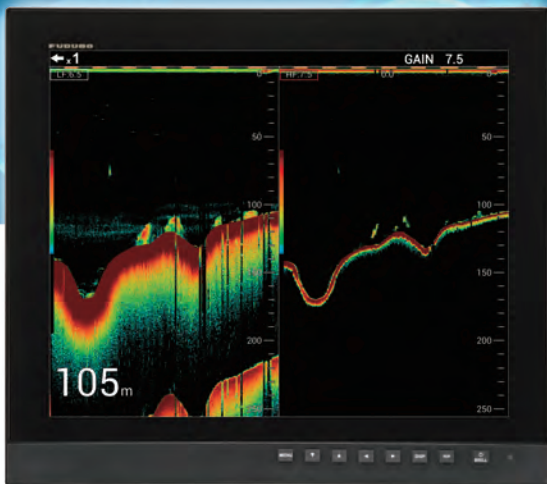


Photo: 19" Marine Display MU-192HD (Customer Supply)

Model

HI-RES TruEcho CHIRP FISH FINDER FCV-1900B

*High resolution echoes
from shallow to deep waters*



www.furuno.com



Upgrade your FCV-1900

By purchasing and installing a software license a FCV-1900B Hi-Res TruEcho CHIRP Fish Finder Fish Size Indicator. For further details, please co

HI-RES TruEcho CHIRP FISH FINDER FCV-1900B

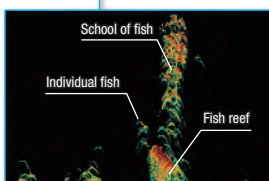
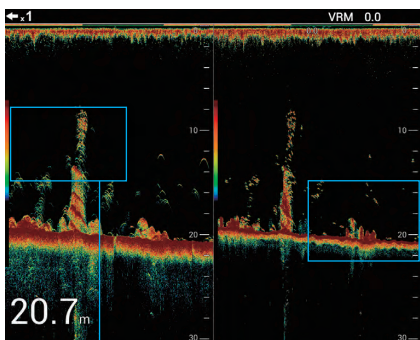
Model

High resolution echoes from shallow to deep waters made possible with TruEcho CHIRP™ technology

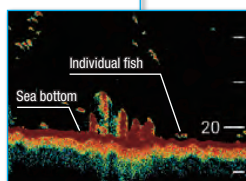


FCV-1900B Hi-Res TruEcho CHIRP Fish Finder allows you to see echoes that would otherwise not have been visible.

Sea bottom

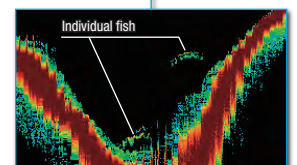
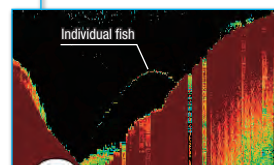
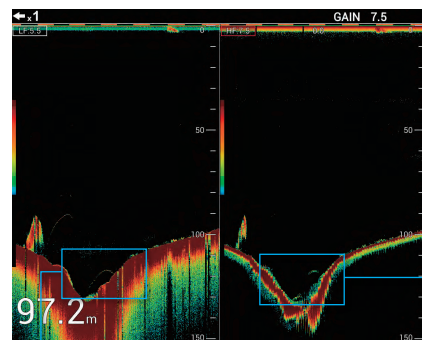


Individual fish can be discriminated within schools of fish, for easy identification of size and species.



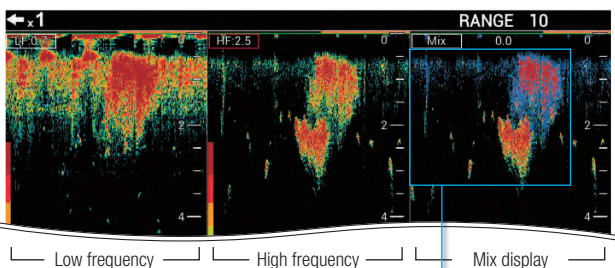
You can easily spot individual fish close to the sea bottom

Individual fish

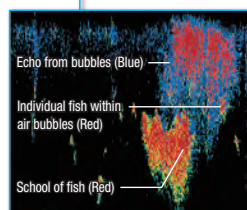


With improved depth resolution, individual fish can be observed even at depths of 100 m and deeper. Fish are displayed in a distinct boomerang shape.

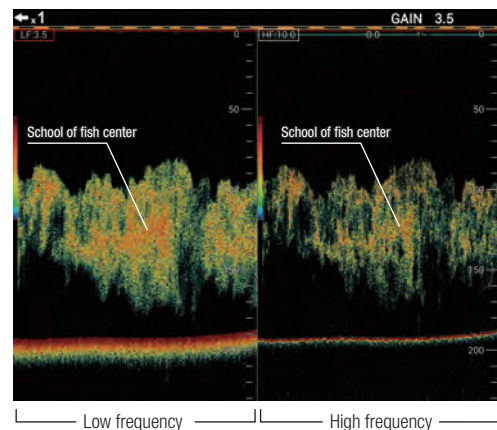
Near the surface



Fish are displayed clearly, even when it is close to the sea surface. In the mix display, bubbles are displayed in blue, and fish are displayed in bright red for easy target discrimination.
(Recommended transducer: CM275LHW)



Middle layer



Spot the center of a school of fish simply by observing the color. Dense echoes are displayed in darker colors.

Fish Finder

You can upgrade your FCV-1900 Fish Finder to a FCV-1900G TruEcho CHIRP with unique fish size indicator. Contact your local FURUNO national distributor.

TruEcho CHIRP WITH UNIQUE FISH SIZE INDICATOR

Model

FCV-1900G



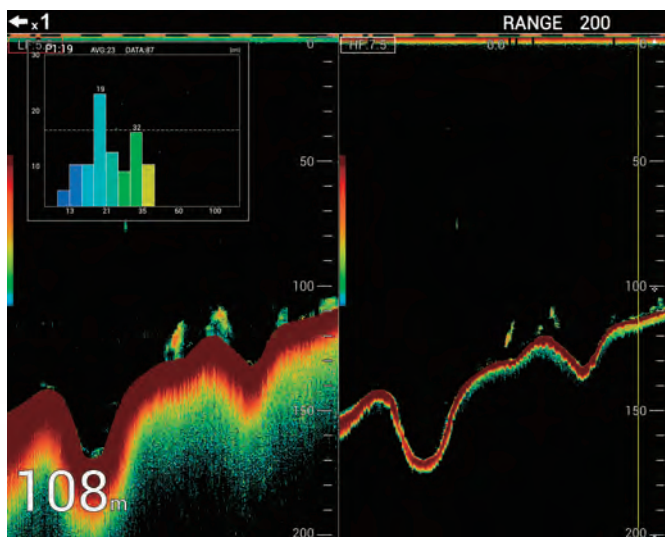
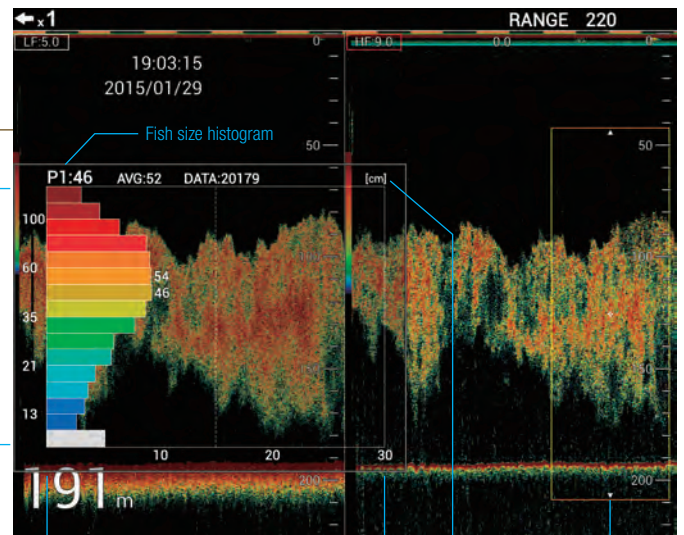
Efficient and sustainable fishing with fish size graph functionality

FCV-1900G features a unique fish size indicator that utilizes TruEcho CHIRP™ technology for precise estimations of fish size and size distribution in schools of fish. You can accurately analyze schools of fish all the way from shallow to deep waters.

Identify size and distribution with the fish size graph for increased efficiency at sea

With a quick glance at the simple and efficient graph, you can get all the information you need to identify fish size and distribution. Once you know the fish size and its distribution, you can use this information to estimate the species and whether it's a viable target or not. Together with the TruEcho CHIRP™ technology, the FCV-1900G allows you to choose the best position to throw your net. Then, based on the fish size graph, you can choose the right mesh size for efficient operation.

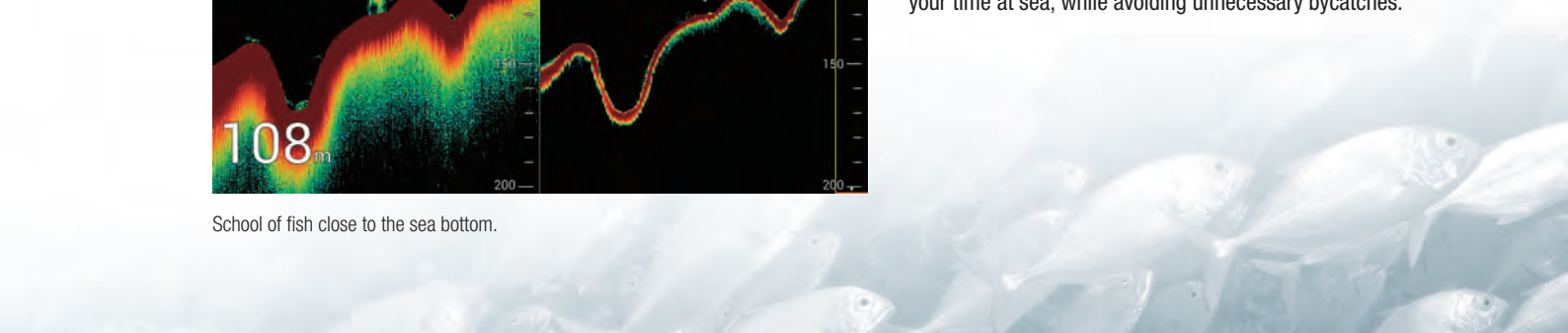
(Recommended transducers: CM265LH or CM599LH)



School of fish close to the sea bottom.

Accurately judge which target to go after

Experience incredibly accurate echoes, even in deep waters thanks to our TruEcho CHIRP™ technology. The FCV-1900G is well suited for trawlers where accurate and reliable information about the sea bottom is necessary. Utilizing the fish size graph, choosing the right target is simple, allowing you to maximize your time at sea, while avoiding unnecessary bycatches.



SPECIFICATIONS

1. GENERAL

- 1.1 **Transmitting frequency** 15 kHz to 200 kHz, Free-synthesize
 1.2 **Output power** 1, 2 or 3 kWrms
 1.3 **Transmitting rate** 10 to 2700 pulse/min
 (5 to 3000 mm range, normal mode)
 1.4 **Transmitting mode** TruEcho CHIRP™, Standard mode, CW mode
 1.5 **Pulselength** 0.05 to 5 ms
 1.6 **External monitor (required specifications)**
Display resolution Landscape XGA (1024x768), SXGA (1280x1024), FHD (1920x1080), Portrait SXGA (1024x1280)

2. PROCESSOR UNIT

- 2.1 **Color indication**
Echo color 8, 16 or 64 colors according to echo intensity
Background color Select from 5 colors
 2.2 **Hue** 7 steps (standard, Hue 1 to 5, customized)
 2.3 **Echo display mode** Single mode (high/low frequency), Dual-frequency, Zoom, User 1/2
 User 1/2 available to use mixture, multi-gain, telesounder and external sounder display
 2.4 **Zoom display** Bottom-lock expansion, Bottom zoom, Marker zoom, Discrimination zoom
 2.5 **Depth range** 5 to 3000 m
 2.6 **Range shift** 2000 m max.
 2.7 **Expansion range** 2 to 200 m
 2.8 **Fish size histogram (FCV-1900G only)** 2 m depth or more, specified transducer required
 2.9 **Display advance speed** 6 steps (Lines/TX: Freeze, 1/4, 1/2, 1/1, 2/1, 4/1)
 2.10 **Data recording** Echo display and measured data can be recorded to internal memory
 2.11 **Language** Chinese, Danish, English, French, Japanese, Korean, Russian, Spanish, Norwegian

3. INTERFACE

- 3.1 **Number of port**
NMEA 3 ports, NMEA V1.5/2.0/3.0
LAN 1 port, Ethernet 100Base-TX (HUB required)
CIF 1 port
Net sonde 1 port, (sonde marker/ sonde KP)
Video signal 1 port, HDMI type-D
External KP 1 port
Temperature sensor 1 port
USB 1 port, USB2.0
 (specified monitor brilliance control available)
 3.2 **Data sentences**
Input GGA, GLL, GNS, MTW, VHW, VTG
Output DBS, DBT, DPT, MTW, TLL
 3.3 **Output proprietary sentences**
PFEC afl, bcd, dat, mrk

4. POWER SUPPLY

- 4.1 **Processor unit** 12-24 VDC: 8.3-3.9 A
Rectifier (RU-1746B-2, option) 100/110/115/220/230 VAC, 1 phase, 50/60 Hz
AC/DC power supply unit (PR-240, option) 100-115/200-230 VAC, 1 phase, 50-60 Hz

5. ENVIRONMENTAL CONDITIONS

- 5.1 **Ambient temperature** -15°C to +55°C
 5.2 **Relative humidity** 95% or less at +40°C
 5.3 **Degree of protection** IP22
 5.4 **Vibration** IEC 60945 Ed.4

EQUIPMENT LIST

Standard

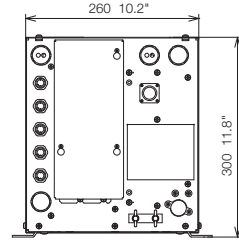
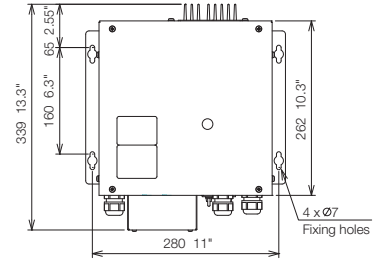
1. Processor Unit (FCV-1901) x1
 2. Control Unit (FCV-1902) x1
 3. Spare parts, Installation materials

Option

Transducer, Thru-hull pipe, Interface Unit (FCV-1903), FURUNO Ethernet HUB Series, Junction box, Booster box, Temperature sensor, AC/DC power supply unit, Rectifier, Installation material, Cable assembly, Cable (for transducer extension), HDMI-M Cable

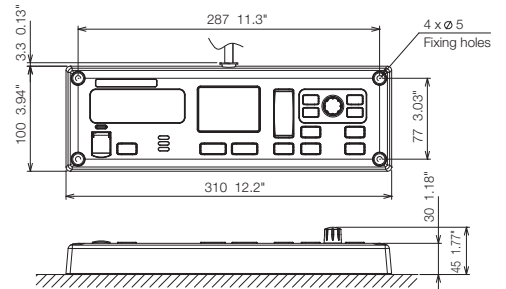
Processor Unit

FCV-1901
 10.2 kg 22.5 lb

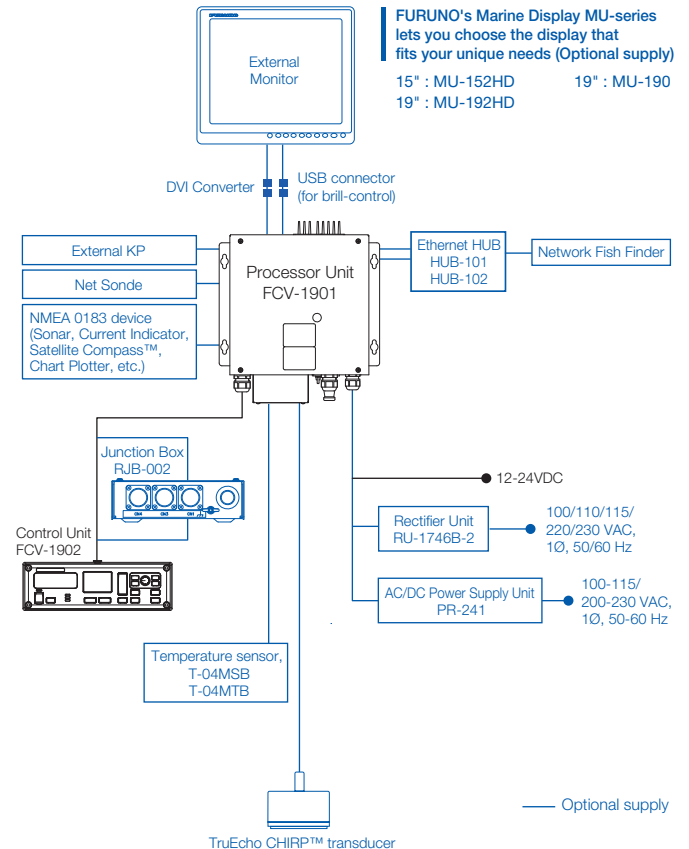


Control Unit

FCV-1902
 1.1 kg 2.4 lb



Interconnection Diagram



Beware of similar products

All brand and product names are registered trademarks, trademarks or service marks of their respective holders.

SPECIFICATIONS SUBJECT TO CHANGE WITHOUT NOTICE

FURUNO ELECTRIC CO., LTD.
 Japan | www.furuno.com
FURUNO U.S.A., INC.
 U.S.A. | www.furunousa.com
FURUNO PANAMA S.A.
 Republic of Panama | www.furuno.com.pa
FURUNO (UK) LIMITED
 U.K. | www.furuno.co.uk
FURUNO NORGE A/S
 Norway | www.furuno.no

FURUNO DANMARK A/S
 Denmark | www.furuno.dk
FURUNO SVERIGE AB
 Sweden | www.furuno.se
FURUNO FINLAND OY
 Finland | www.furuno.fi
FURUNO POLSKA Sp. z o.o.
 Poland | www.furuno.pl
FURUNO DEUTSCHLAND GmbH
 Germany | www.furuno.de

FURUNO FRANCE S.A.S.
 France | www.furuno.fr
FURUNO ESPAÑA S.A.
 Spain | www.furuno.es
FURUNO ITALIA S.R.L.
 Italy | www.furuno.it
FURUNO HELLAS S.A.
 Greece | www.furuno.gr
FURUNO (CYPRUS) LTD
 Cyprus | www.furuno.com.cy

FURUNO SHANGHAI CO., LTD.
 China | www.furuno.com/cn
FURUNO CHINA CO., LTD.
 Hong Kong | www.furuno.com/cn
FURUNO KOREA CO., LTD
 Korea
FURUNO SINGAPORE
 Singapore | www.furuno.sg

PT FURUNO ELECTRIC INDONESIA
 Indonesia | www.furuno.id
FURUNO ELECTRIC (MALAYSIA) SND. BHD.
 Malaysia | www.furuno.my