

FURUNO

15" MULTI-COLOR LCD RADAR

Model

FAR-1416/1426

(12 kW)

(25 kW)

Enhance your safety at sea and enjoy more productive fishing with the new Target Analyzer function.



www.furuno.com

High-Performance Marine – Simple operation with “point-and-click”



Landscape display setting

15" MULTI-COLOR LCD RADAR

Model **FAR-1416/1426**
(12 kW) (25 kW)

Control Unit RCU-029 (Standard)

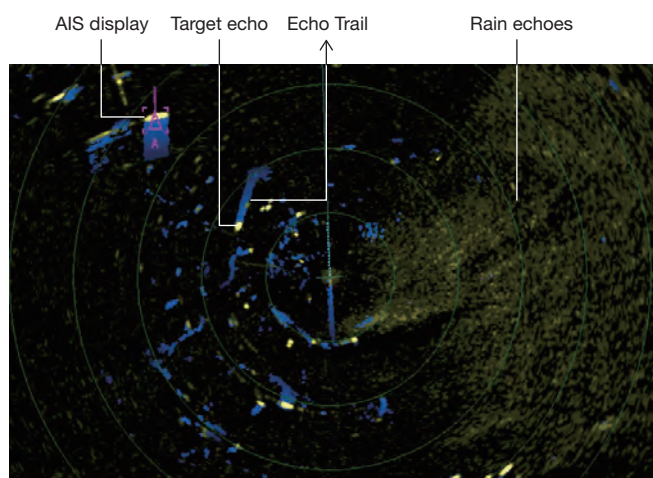


▶ Target Analyzer function* spots hazardous targets instantly!

FURUNO's new technology makes it possible to distinctly display targets closing in, while detecting and eliminating sea surface reflection and rain patches. With the Target Analyzer function turned on, each moving target, rain patches, and sea surface reflection are colored according to the degree of the hazard. This helps improve your safety and situational awareness by displaying different, easy to see colors.

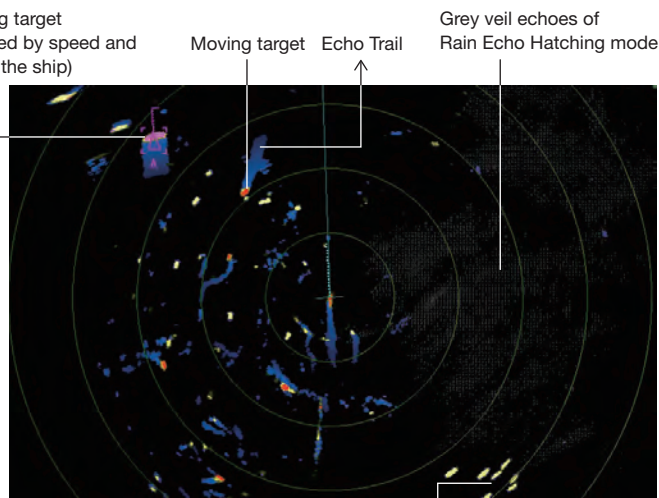
Sea surface: Green	Moving targets: Red or Pink**
Rain: Gray	Closing in targets: Pink or White**

* Heading data and position data required.
** Colors can be selected by the setting.



Target Analyzer: OFF
Echo Average: OFF
Rain Echo Hatching: OFF

Approaching target
(distinguished by speed and
direction of the ship)



Target Analyzer: ON
Echo Average: ON
Rain Echo Hatching: ON

Other echoes
(slowing ships, birds, buoys etc.)

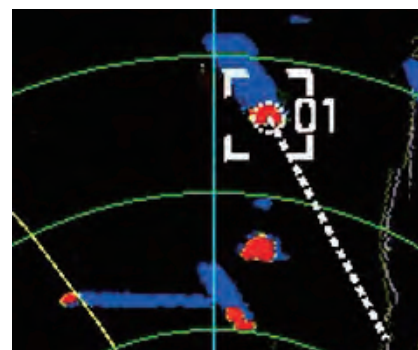
▶ Fast Target Tracking™ (TT) to Immediately Grasp Your Surroundings

After selecting a target, it only takes a few seconds for a speed and course vector to be displayed. With accurate tracking information, estimation of other vessels course and speed is made easier.

* Heading data and position data required.



Before selecting a target



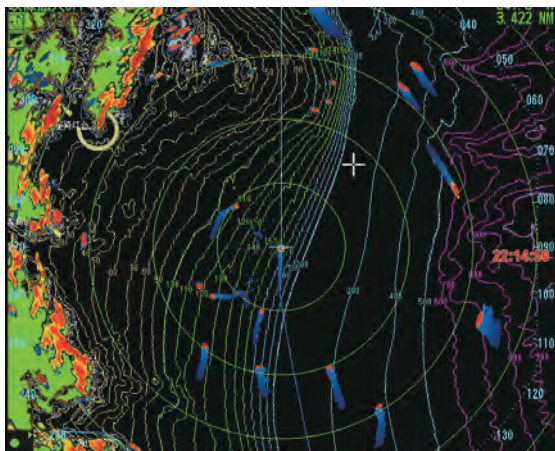
Speed and course vector

Radar with Chart Plotter

” menu functionality –

▶ Chart overlay on radar presentation

By overlaying the radar presentation with MapMedia vector charts, you can clearly recognize coastlines and buoys at a glance. Records of your vessel's track points and waypoints will help memorizing fishing spots. North-up, Course-up, and Head-up direction modes are available.



▶ Seamless Zoom and Cursor operation

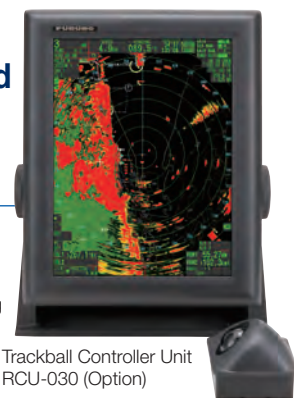
▶ Easy Operation

Enjoy a very intuitive operation, with the use of shortcut keys and the trackball.

▶ Space-saving and straightforward installation with the display unit built-in processor

Both Portrait and landscape are available to fit customers' preference.

Portrait display setting



Trackball Controller Unit RCU-030 (Option)

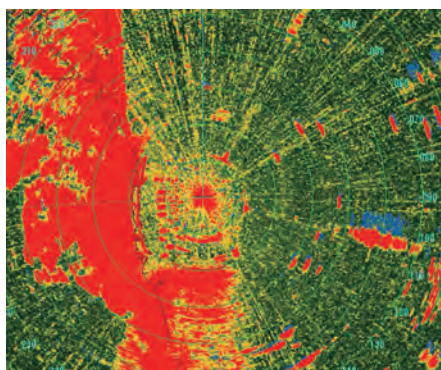
▶ Easily Upgrade from FR-8002/8005 Series

Utilizing the antenna of FURUNO FR-8002/8005 series, you can easily install this new radar FAR-1416/1426 and upgrade the radar function.

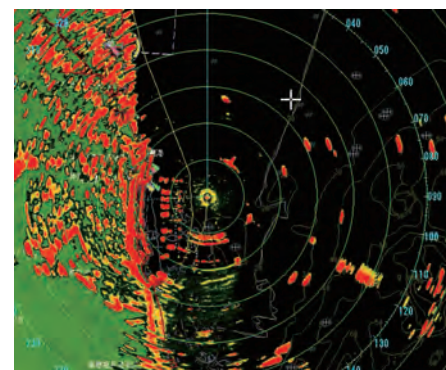


▶ Automatic Clutter Elimination (ACE) for unprecedented echo clarity

Quickly adjust the radar image with the push of a single button. With ACE activated, the system automatically adjusts clutter reduction filters and gain control according to sea and weather conditions selected by the user (calm/rough sea/hard rain). You will be free from the trouble of adjusting the image and be able to concentrate on the operation of the vessel.



ACE turned-off



ACE turned-on

15" MULTI-COLOR LCD RADAR

Model FAR-1416/1426

SPECIFICATIONS

RF TRANSCEIVER

Frequency 9410 MHz ±30 MHz, P0N
Output Power FAR-1416: 12 kW, FAR-1426: 25 kW

ANTENNA

Radiator Length 4 ft (XN12A), 6 ft (XN13A)
Rotation 24 rpm (RSB-0070), 48 rpm (RSB-0073)
Beamwidth Horizontal 1.9° (XN12A), 1.4° (XN13A)
Vertical 20°

DISPLAY UNIT

Screen Size 15-inch color LCD, 304 x 228 mm, 1024 x 768 dots (XGA),
Portrait/landscape mode available
Screen Brightness 400 cd/m² typical
Echo Tones 32 levels

Range and Ring Interval

Range (NM)	0.125	0.25	0.5	0.75	1	1.5	2	3	4	6	8	12	16	24	32	48	72	96*
Ring (NM)	0.025	0.05	0.1	0.25	0.25	0.25	0.5	0.5	1	1	2	2	4	4	8	8	12	16*

* FAR-1426 only
Presentation Mode Head-up, STAB Head-up, North-up*, Course-up*,
Stem-up*, Destination-up*, True motion*
* Heading data required.

Target Tracking (TT) Auto or manual acquisition: 50 targets in 0.2-32 NM

Time of vector: 30 s to 60 minutes

Display capacity: 100 targets

Time of vector: 30 s to 60 minutes

Echo trail True/Relative Trail length: 0, 15/30 sec, 1 to 30 minutes or continue

PLOTTER

Projection Mercator
Usable Area 85° latitude or below
Direction Modes North-up, Head-up, Course-up, Specified direction up
Map Scale 0.125 to 1,024 NM
Memory Capacity Own ship's track: 30,000 pts
Other ship's track: TT 10,000 pts/50 ships
AIS 1,000 pts/100 ships
Consort ship 10,000 pts/40 ships
GPS buoy 10,000 pts/100 sets

Marks/lines 30,000 pts

Waypoint 3,500 pts

Route 200 routes with 100 waypoint each

Cartography MapMedia Vector Chart

Own Ship's Tracking 7 colors

INTERFACE

Number of Ports on Display unit
Heading 1 port: AD-10 format or IEC61162-1
NMEA0183 3 ports: IEC61162-1
CANbus 1 port
USB 2 ports
Contact Closure 3 ch: Alert output (Normal open: 2 ch, Normal close: 1 ch)
Sub display 2 ports (Input/Output)
LAN 1 port, 100 BASE-TX
DVI-D 1 port
RGB 1 port, RGB monitor or VDR

ENVIRONMENT

Temperature Antenna unit: -25°C to +55°C (storage: +70°C or less)
Display unit: -15°C to +55°C
Antenna unit: IPX6
Display/ Control unit: IP22
Remote controller: IP56

POWER SUPPLY

FAR-1416: 24 VDC, 5.0 A max.
FAR-1426: 24 VDC, 5.6 A max.

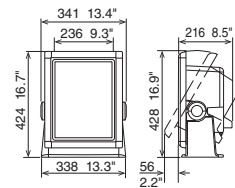
EQUIPMENT LIST

- Standard
1. Display Unit RDP-155
 2. Control Unit RCU-029
 3. Antenna Unit RSB-0070 or RSB-0073 specify when ordering
 4. Antenna Cable 10/15/20/30 m specify when ordering
 5. Power Cable
 6. Spare Parts & Installation Materials
- Option
1. Flush Mount Kit
 2. Trackball Controller Unit RCU-030
 3. Remote Controller RCU-019
 4. AD Converter AD-100
 5. Rectifier RU-1746B-2/RU-3424
 6. AD-DC Power Supply Unit PR-241/PR-851
 7. Switching Hub HUB-100
 8. LAN Cable (2/5/10 m)
 9. NMEA2000 Connector
 10. Cable Assembly

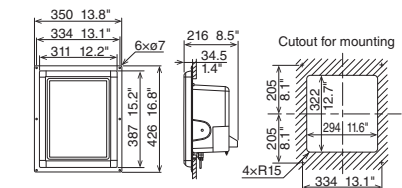
Display Unit

RDP-155

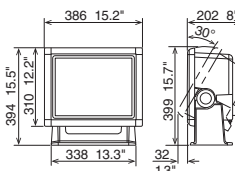
Portrait (Table top) 8.5 kg 18.7 lb



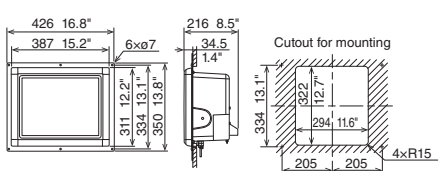
Portrait (Flush Mount) 8.1 kg 17.8 lb



Landscape (Table top) 8.5 kg 18.7 lb

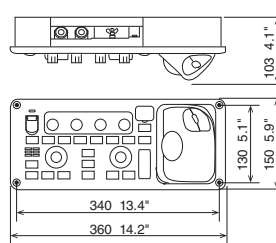


Landscape (Flush Mount) 8.1 kg 17.8 lb



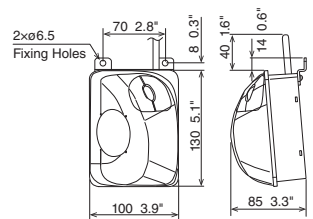
Control Unit

RCU-029 3.5 kg 7.7 lb



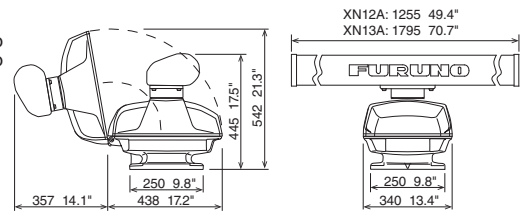
Trackball Controller Unit

RCU-030 0.4 kg 0.9 lb

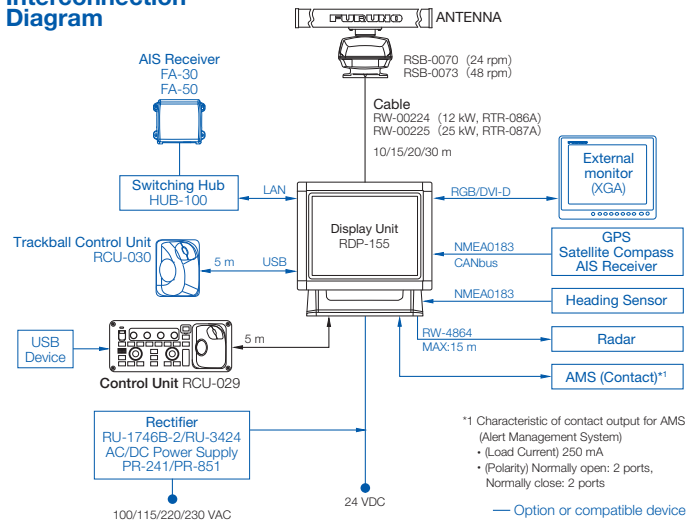


Antenna Unit

XN12A 25 kg 55.1 lb
XN13A 27 kg 59.5 lb



Interconnection Diagram



*1 Characteristic of contact output for AMS (Alert Management System)
• (Load Current) 250 mA
• (Polarity) Normally open: 2 ports, Normally close: 2 ports
— Option or compatible device

Beware of similar products

All brand and product names are registered trademarks, trademarks or service marks of their respective holders.

SPECIFICATIONS SUBJECT TO CHANGE WITHOUT NOTICE

FURUNO ELECTRIC CO., LTD.
Japan | www.furuno.com
FURUNO U.S.A., INC.
U.S.A. | www.furunousa.com
FURUNO PANAMA S.A.
Republic of Panama | www.furuno.com.pa
FURUNO (UK) LIMITED
U.K. | www.furuno.co.uk
FURUNO NORGE A/S
Norway | www.furuno.no

FURUNO DANMARK A/S
Denmark | www.furuno.dk
FURUNO SVERIGE AB
Sweden | www.furuno.se
FURUNO FINLAND OY
Finland | www.furuno.fi
FURUNO POLSKA Sp. Z o.o.
Poland | www.furuno.pl
FURUNO DEUTSCHLAND GmbH
Germany | www.furuno.de

FURUNO FRANCE S.A.S.
France | www.furuno.fr
FURUNO ESPAÑA S.A.
Spain | www.furuno.es
FURUNO ITALIA S.R.L.
Italy | www.furuno.it
FURUNO HELLAS S.A.
Greece | www.furuno.gr
FURUNO (CYPRUS) LTD
Cyprus | www.furuno.cy

FURUNO SHANGHAI CO., LTD.
China | www.furuno.com/cn
FURUNO CHINA CO., LTD.
Hong Kong | www.furuno.com/cn
FURUNO KOREA CO., LTD
Korea
FURUNO SINGAPORE
Singapore | www.furuno.sg

PT FURUNO ELECTRIC INDONESIA
Indonesia | www.furuno.id
FURUNO ELECTRIC (MALAYSIA) SND. BHD.
Malaysia | www.furuno.my